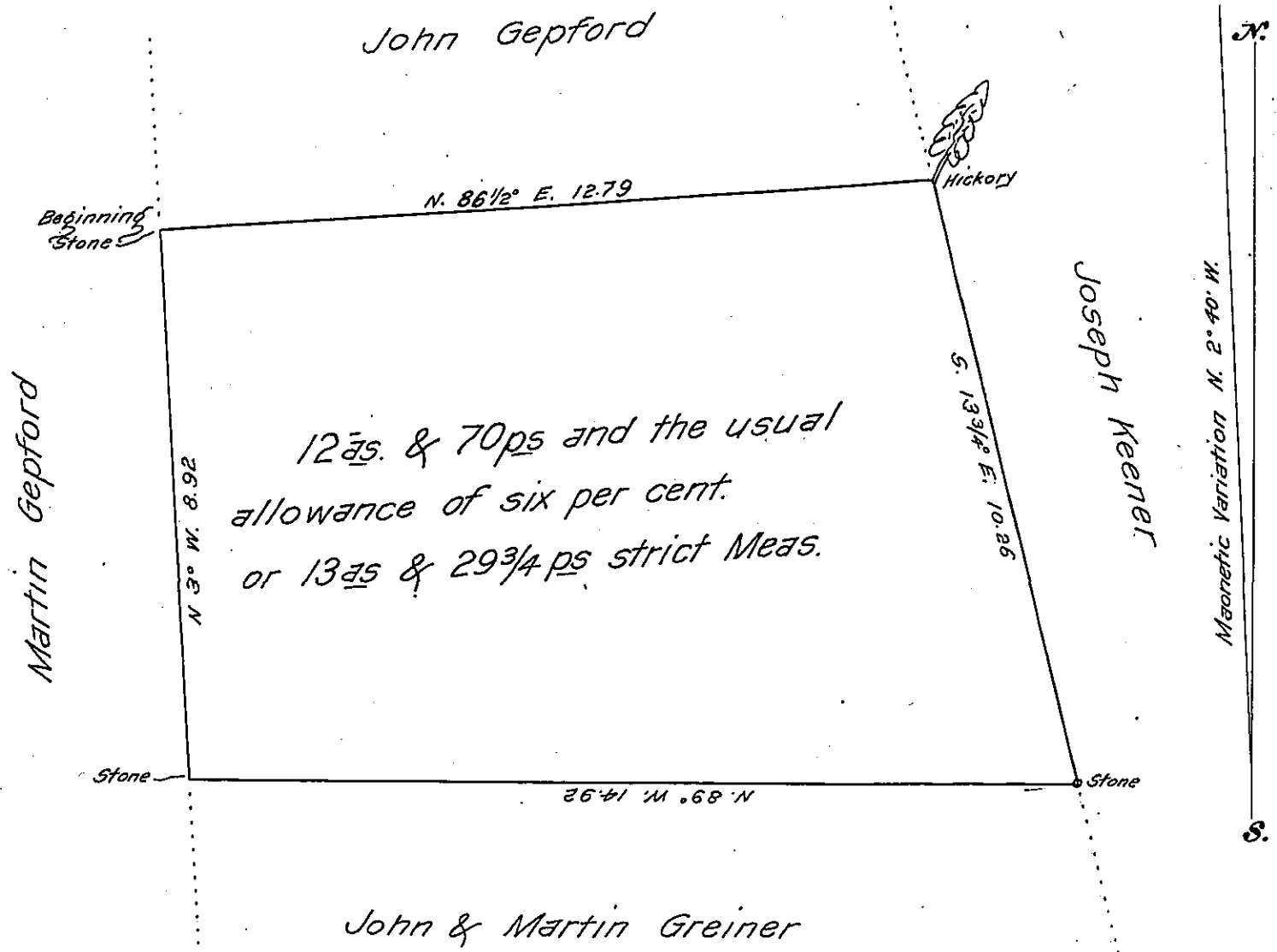


FORM No. 1.



The above draught represents twelve Acres and Seventy perches of land, with the usual allowance of six per cent, for roads and highways, situate in Mount Joy Township, Lancaster County,

Surveyed the 16th day of October, Anno Domini 1863, in pursuance of a Warrant dated September 21st 1863, granted to Daniel Shriner and Benj. Ritter, Assignees of Thomas Master-son.

To James P. Barr } per
 Surveyor General, Pa. } A. R. Witmer, Sury^r for Lan^e Co:

N.B. - Distances in Chains and links }
 1 Chain = 100 links, or 4 perches }

IN TESTIMONY that the above is a copy of the original remaining on file in the Department of Internal Affairs of Pennsylvania, made conformably to an Act of Assembly approved the 16th day of February 1833, I have hereunto set my hand and caused the Seal of said Department to be affixed at Harrisburg, this eighteenth day of JANUARY 1907.

Isaac D. Brown
 Secretary of Internal Affairs.